

# Air generator Excal GT-FC

climats

Temperature :  
from -70°C to +200°C



Airflow rate :  
up to 32Nm<sup>3</sup>/h

\*Nm<sup>3</sup> : normal cubic metre

The Excal GT-FC air generator was designed for the thermal conditioning of electronic components.

It can force air, at required flow rate and temperature, onto a very specific area. The air temperature can vary very quickly along a large range, with a short stabilization time :

- Temperature range : from -70°C to +200°C
- Temperature stability :  $\pm 0,1^{\circ}\text{C}^*$
- Average temperature transition time :  $>120^{\circ}\text{C}/\text{min}$

\*depending on the use conditions

Dimensions (mm)	
Machinery unit	width : <b>610</b> depth : <b>1050</b> height : <b>1080</b> (without flexible start nor screen)
Flexible	length : <b>2200</b> ( $\pm 100$ ) external $\varnothing$ : <b>84</b> ( $\pm 2$ )

Input-output supplies	
Electricity	220V single-phased 32A
Cooling water	connection $\varnothing$ 20-27mm ; rate 0,3m <sup>3</sup> /h ; temperature $<23^{\circ}\text{C}$
Compressed air	oil free, 1 $\mu$ filtration ; pressure 6 $<>$ 10bars ; temperature $<25^{\circ}\text{C}$ ; rate 50m <sup>3</sup> /h (from 9L/s) ; dry dewpoint $<-40^{\circ}\text{C}$

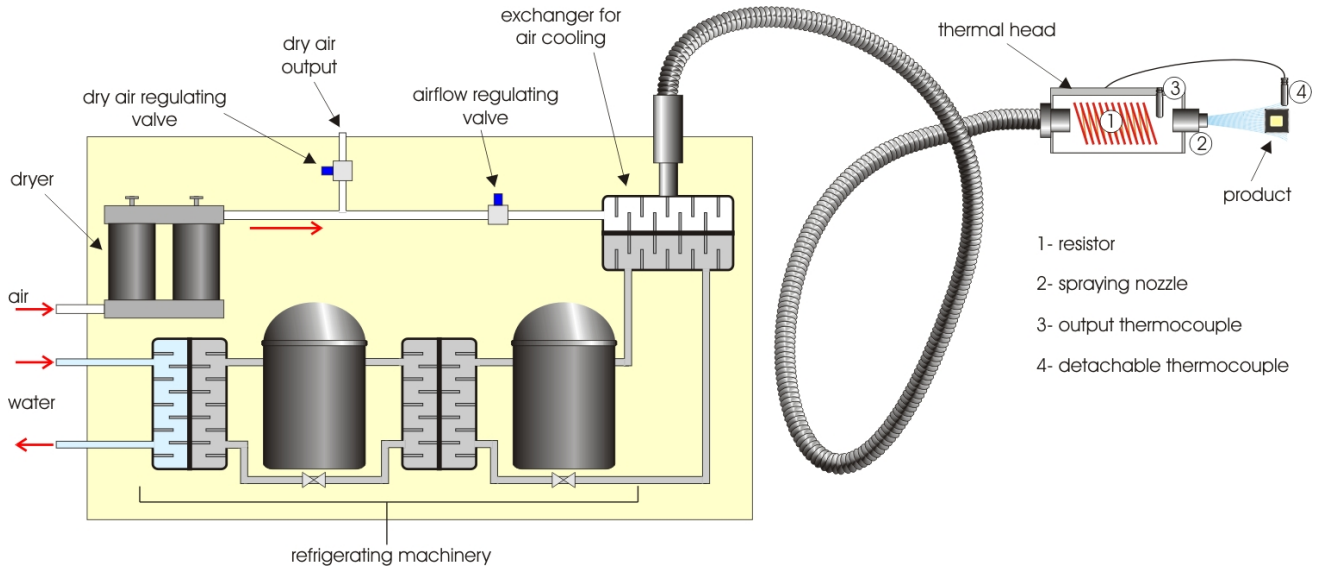


# Functioning principles

After passing through a reconditioning dryer, the air is cooled down to the minimum temperature and then, heated up to the set-point temperature by a resistor located in the thermal head.

An auxiliary dry air output enables the working area to be swept, thanks to a cap (not supplied), to prevent frost formation.

The temperature regulation is either done in the thermal head or through a probe on the product to be tested.



# Construction



The **Excalt GT-FC** air generator has a refrigerating machinery, located into a soundproof cast solid unit.

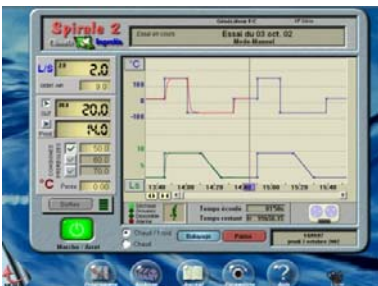
The operator interface consists of a flat screen and a mouse.

The airflow passes through a flexible that ends in a thermal head, on which a nozzle can be adapted.

Optionally, the flexible can be equipped with a horizontal holding arm.



# Pilotage

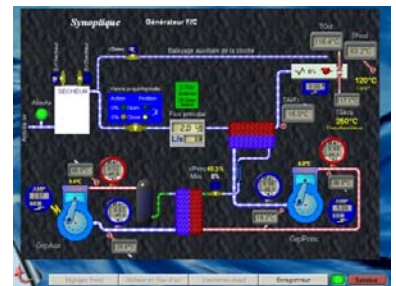


The control panel allows the access to set points, parameters and other software functions

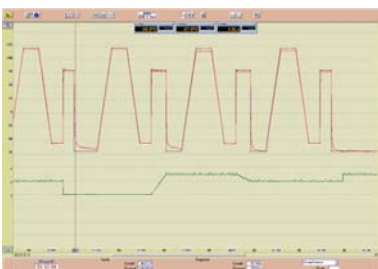
Our software ensures the different operations of the chamber piloting and the test and recording management.

# Spirale 2

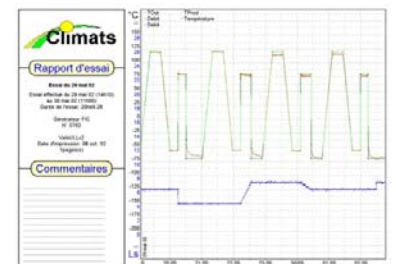
With exceptional ergonomics, it offers numerous and powerful functions, including the remote control through the network.



A dynamic synoptic enables you to control pressures, fluids flowing, ... on your screen



An exceptional graphic recorder



Personalized test reports

